



# Waqf Management System of India

December 2015 Updates

An e-Governance Initiative under the aegis of Ministry of Minority Affairs, Govt. of India

## GIS based Decision Support System in WAMSI On-line System for encroachments detection, recognized by The Grand Jury of Manthan Awards 2015 as Special Mention

As an integral part of WAMSI On-line System, NIC has developed a GIS-based Decision Support System (DSS) for Encroachment Detection on the Waqf Properties. GIS features in WAMSI On-line System uses Satellite Imagery to fix the layouts of Waqf Properties on the Earth Surface on the basis of GPS Coordinates in order to protect them from vested interests in future. The GIS based DSS helps in detecting the encroachments and also tells when that encroachments happened, with the help of Historical Satellite Imageries.

The Grand Jury of Manthan Awards 2015 has recognized this GIS based DSS in WAMSI On-line System as Special Mention during the presentation ceremony of Manthan Awards 2015 on December 02, 2015 at India Habitat Centre, New Delhi. The Award & Citation were received by Shri Rakesh Mohan, Joint Secretary (Ministry of Minority Affairs, Govt. of India) alongwith Shri Dinesh Chandra, Technical Director (NIC) and Shri Naeem Ahmed, Technical Director (NIC) & National WAMSI Project Coordinator. The Award & Citation were shared with Secretary, Central Waqf Council, Shri Ali Ahmed Khan and Deputy Director General, National Informatics Centre, Shri H. P. Sharma, for their continuous guidance & support for innovations in the ever-evolving WAMSI On-line System.

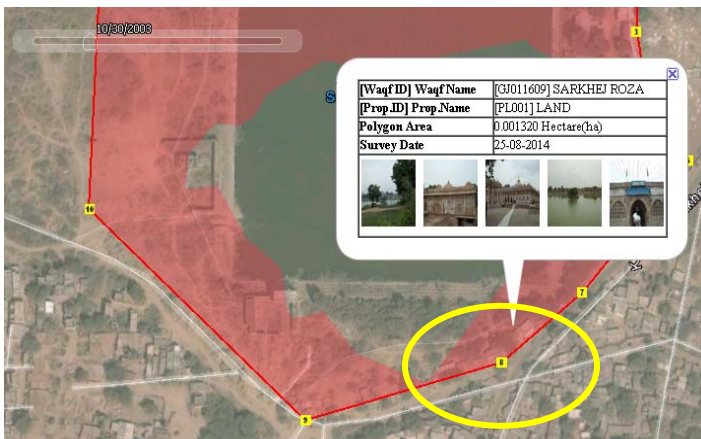


**L to R:** Shri Tony Connor, Director (Public Interest Registry, a non-profit organization that operates the ".org" domain) giving away the Award; Shri Rakesh Mohan, Joint Secretary (Ministry of Minority Affairs); Shri Dinesh Chandra, Technical Director (NIC); Shri Naeem Ahmed, Technical Director (NIC) & National WAMSI Project Coordinator.

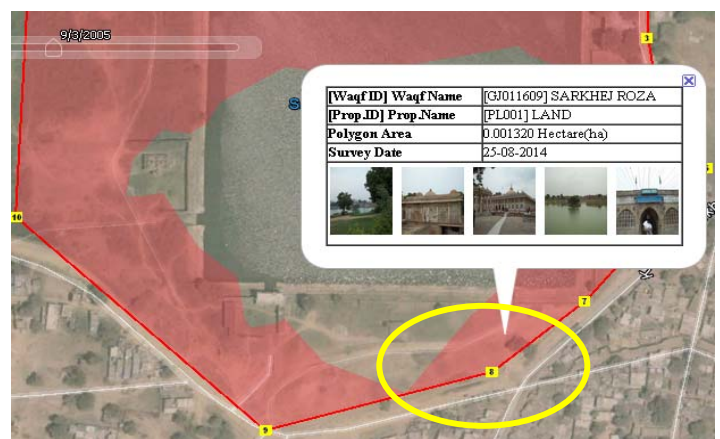


**L to R:** Shri H. P. Sharma, Dy. Director General (NIC); Shri Ali Ahmed Khan, Secretary (Central Waqf Council); Shri Rakesh Mohan, Joint Secretary (Ministry of Minority Affairs); Shri Naeem Ahmed, Technical Director (NIC) & National WAMSI Project Coordinator; Shri Dinesh Chandra, Technical Director (NIC).

**Snapshots of WAMSI On-line System in which encroachments were detected with the help of GIS based DSS System, available to the General Public through its Public Interface <http://wamsi.nic.in/> without any Username & Password.**



In the Year 2003, an Encroachment near boundary detected (Satellite Imagery dated 30-OCT-2003)



In the Year 2005, an Encroachment near boundary cleared (Satellite Imagery dated 03-SEP-2005)

The general public earlier did not used to get the information about the Waqf Properties as easily as this web portal is now providing, all the current and updated information, including GIS capabilities & Decision Support System to detect the encroachments. The system is expected to mitigate problems such as (a) Mismanagement of Waqf Properties, (b) Nil or very low revenue, (c) Beneficiaries being left out, (d) Loss of Waqf Properties due to litigations, sale, alienation, etc. GIS Proof-of-Concept incorporated into WAMSI On-line System has also proved its real benefits to the stakeholders.

Suggestions are invited to improve the "Public Interface of WAMSI System" @ <http://wamsi.nic.in/> at the following address:  
Shri Naeem Ahmed, Technical Director & National WAMSI Project Coordinator  
**NATIONAL INFORMATICS CENTRE (HQ), GOVERNMENT OF INDIA**  
Room No. 359, A-Block, CGO Complex, Lodhi Road, NEW DELHI-110003. Email:naeem@nic.in



**Waqf Records Computerization Project - Data Ingestion Status as on December 31, 2015** (%) means percent complete w.r.t. declared Waqf Estates; (Nos.) means plus/minus w.r.t. last month

S.No.	State/UT Waqf Board	CCF Fund Sanction Date (Initial Fund Release)	Waqf Estates (Declared/Registered)	Pre-Digitization Work* (*Information provided by CWC)	Records in WAMSI-DMS Off-line System* (*Information provided by CWC)	Records in WAMSI On-line System REGISTRATION Module			Records in WAMSI RETURN Module	Records in WAMSI LEASING Module	Records in WAMSI LITIGATION Module	
						Waqf Estates	Immovable Properties	Movable Properties			External Court Cases	Internal SWB Cases
1	Andaman & Nicobar	October 19, 2010	84	( 0.00 %)	( 0.00 %)	49 ( 58.33 %)	83 ( 0)	( 0)	( 0)	( 0)	( 0)	( 0)
2a	Andhra Pradesh	June 17, 2011	3546	3450 ( 97.29 %)	( 0.00 %)	3533 ( 99.63 %)	6319 ( 0)	( 0)	( 0)	( 0)	( 0)	( 0)
2b	Telangana State		32157	30240 ( 94.04 %)	29000 ( 90.18 %)	30284 ( 94.18 %)	26301 ( 498)	( 0)	( 0)	1 ( 0)	( 0)	( 0)
3	Assam	March 09, 2010	987	941 ( 95.34 %)	941 ( 95.34 %)	941 ( 95.34 %)	987 ( 0)	( 0)	394 ( 0)	11 ( 0)	7 ( 0)	( 0)
4	Bihar (Shia)	May 24, 2010	227	219 ( 96.48 %)	219 ( 96.48 %)	220 ( 96.92 %)	573 ( 0)	16 ( 0)	20 ( 0)	( 0)	19 ( 0)	1 ( 0)
5	Bihar (Sunni)	May 24, 2010	2458	2458 (100.00 %)	1900 ( 77.30 %)	2455 ( 99.88 %)	3885 ( 0)	18 ( 0)	41 ( 0)	7 ( 0)	60 ( 0)	15 ( 0)
6	Chandigarh		33	33 (100.00 %)	33 (100.00 %)	33 (100.00 %)	34 ( 0)	( 0)	( 0)	( 0)	( 0)	( 0)
7	Chhattisgarh	March 19, 2010	800	794 ( 99.25 %)	794 ( 99.25 %)	800 (100.00 %)	2006 ( 0)	( 0)	31 ( 0)	( 0)	87 ( 0)	276 ( 0)
8	Delhi	July 12, 2010	1964	1930 ( 98.27 %)	1930 ( 98.27 %)	1964 (100.00 %)	854 ( 0)	( 0)	( 0)	( 0)	( 0)	( 0)
9	Gujarat	July 04, 2012	11681	10911 ( 93.41 %)	( 0.00 %)	10942 ( 93.67 %)	20113 ( 19)	4979 ( 23)	2284 ( 0)	( 0)	11 ( 0)	6 ( 0)
10	Haryana	May 24, 2010	12975	12593 ( 97.06 %)	3833 ( 29.54 %)	12593 ( 97.06 %)	20362 ( 187)	( 0)	( 0)	7493 ( 184)	( 0)	( 0)
11	Himachal Pradesh	March 19, 2010	1099	70 ( 6.37 %)	36 ( 3.28 %)	945 ( 85.99 %)	2025 ( 0)	( 0)	( 0)	( 0)	( 0)	( 0)
12	Jammu & Kashmir	January 21, 2011	214	( 0.00 %)	( 0.00 %)	1 ( 0.47 %)	1 ( 0)	( 0)	( 0)	( 0)	( 0)	( 0)
13	Karnataka	March 19, 2010	29902	14000 ( 46.82 %)	7500 ( 25.08 %)	29902 (100.00 %)	35158 ( 4424)	19 ( 0)	( 0)	( 0)	( 0)	( 0)
14	Kerala	May 24, 2010	8947	8879 ( 99.24 %)	8879 ( 99.24 %)	8947 (100.00 %)	37392 ( 225)	( 0)	1166 ( 0)	( 0)	1146 ( 212)	763 ( 0)
15	Lakshadweep	August 03, 2010	338	338 (100.00 %)	338 (100.00 %)	338 (100.00 %)	892 ( 0)	( 0)	784 ( 13)	( 0)	4 ( 0)	37 ( 1)
16	Madhya Pradesh	July 12, 2010	14864	14734 ( 99.13 %)	14702 ( 98.91 %)	14864 (100.00 %)	22989 ( 1201)	237 ( 11)	741 ( 0)	134 ( 0)	426 ( 0)	2904 ( 0)
17	Maharashtra	March 19, 2010	8226	8090 ( 98.35 %)	7910 ( 96.16 %)	8226 (100.00 %)	20529 ( 23)	112 ( 0)	4800 ( 92)	( 0)	7 ( 0)	( 0)
18	Manipur	September 16, 2010	953	678 ( 71.14 %)	710 ( 74.50 %)	717 ( 75.24 %)	735 ( 1)	( 0)	( 0)	( 0)	( 0)	( 0)
19	Meghalaya	January 24, 2011	61	18 ( 29.51 %)	18 ( 29.51 %)	43 ( 70.49 %)	58 ( 5)	51 ( 0)	56 ( 0)	( 0)	( 0)	( 0)
20	Odisha	March 19, 2010	3729	845 ( 22.66 %)	845 ( 22.66 %)	3475 ( 93.19 %)	6363 ( 0)	( 0)	( 0)	( 0)	( 0)	( 0)
21	Puducherry	May 24, 2010	45	45 (100.00 %)	45 (100.00 %)	45 (100.00 %)	671 ( 0)	254 ( 0)	201 ( 0)	90 ( 0)	1 ( 0)	( 0)
22	Punjab	March 19, 2010	24540	21385 ( 87.14 %)	325 ( 1.32 %)	24540 (100.00 %)	34131 ( 0)	( 0)	( 0)	467 ( 0)	( 0)	( 0)
23	Rajasthan	December 29, 2010	18950	17505 ( 92.37 %)	18005 ( 95.01 %)	18513 ( 97.69 %)	23347 ( 111)	( 0)	218 ( 0)	( 0)	( 0)	19 ( 0)
24	Tamil Nadu	March 19, 2010	7453	7453 (100.00 %)	7354 ( 98.67 %)	7453 (100.00 %)	53369 ( 0)	8604 ( 0)	8712 ( 0)	1597 ( 0)	549 ( 0)	320 ( 0)
25	Tripura	March 19, 2010	1869	1869 (100.00 %)	812 ( 43.45 %)	1794 ( 95.99 %)	2492 ( 10)	62 ( 0)	14 ( 0)	1 ( 0)	2 ( 0)	( 0)
26	Uttarakhand	November 09, 2010	2054	2020 ( 98.34 %)	1500 ( 73.03 %)	2051 ( 99.85 %)	4318 ( 18)	( 0)	250 ( 5)	( 0)	3 ( 1)	( 0)
27	Uttar Pradesh (Shia)		10500	3220 ( 30.67 %)	( 0.00 %)	851 ( 8.10 %)	843 ( 730)	( 0)	( 0)	( 0)	( 0)	( 0)
28	Uttar Pradesh (Sunni)	March 19, 2010	123115	68932 ( 55.99 %)	9368 ( 7.61 %)	48416 ( 39.33 %)	49343 ( 9974)	3 ( 1)	( 0)	( 0)	( 0)	( 0)
29	West Bengal	March 19, 2010	6744	6744 (100.00 %)	3300 ( 48.93 %)	6462 ( 95.82 %)	73041 ( 21116)	1 ( 0)	( 0)	6 ( 0)	2 ( 0)	( 0)
<b>GRAND TOTAL</b>			<b>330515</b>	<b>240394 ( 72.73 %)</b>	<b>120297 ( 36.4 %)</b>	<b>241397 ( 73.04 %)</b>	<b>449214 ( 38542)</b>	<b>14356 ( 35)</b>	<b>19712 ( 110)</b>	<b>9807 ( 184)</b>	<b>2324 ( 213)</b>	<b>4341 ( 1)</b>